



Dream Cones

Premium Gelato and Sorbets

170/1 Pahonyotin Soi 14, Bangkok, Thailand 10400
cell: (66) 89 909-3556 office: (66) 2 616-9951 fax: (66) 2 616-9953
service@dreamcones.com www.dreamcones.com Skype: michael.greenwald

Quick Tour of Bangkok & Hotel Guide

pics by Michael Greenwald
copyright © 2007 www.dreamcones.com all rights reserved



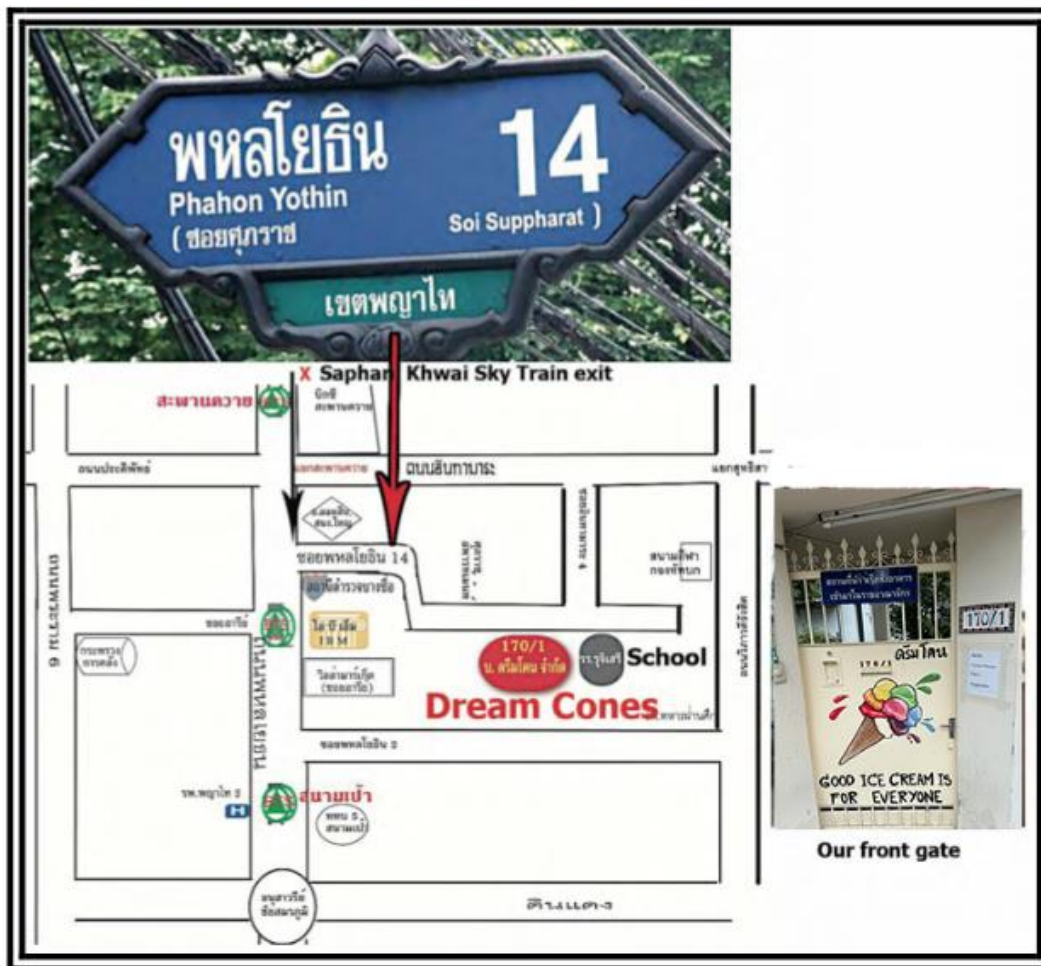
Bangkok at night



Wedding on Bangkok River

Dream Cones Location

บริษัท ครีมโคน จำกัด
Dream Cones Co., Ltd



Address : 170/1 Soi Pahonyotin 14, Samsennai, Phayathai, Bangkok 10400
Tel : 0873644892

Dream Cones is located in the Phaya Thai district of Bangkok. You can take a cab from the airport but it can be very slow from 4-6pm. About \$10-15. Tell the driver to take the expressway. It costs a little more but is faster. **Be sure to use the government cab stand outside Arrivals.** **Do not take transportation offered by people soliciting you in the airport.** If you do not have a lot of luggage you can also take the Sky Train from the airport to Bangkok and then transfer to the local Sky Train (BTS) to reach your hotel. It is much faster and cheaper. In the city always take the sky train or subway if possible even if it does not go exactly where you want. You can get a cab on the street.

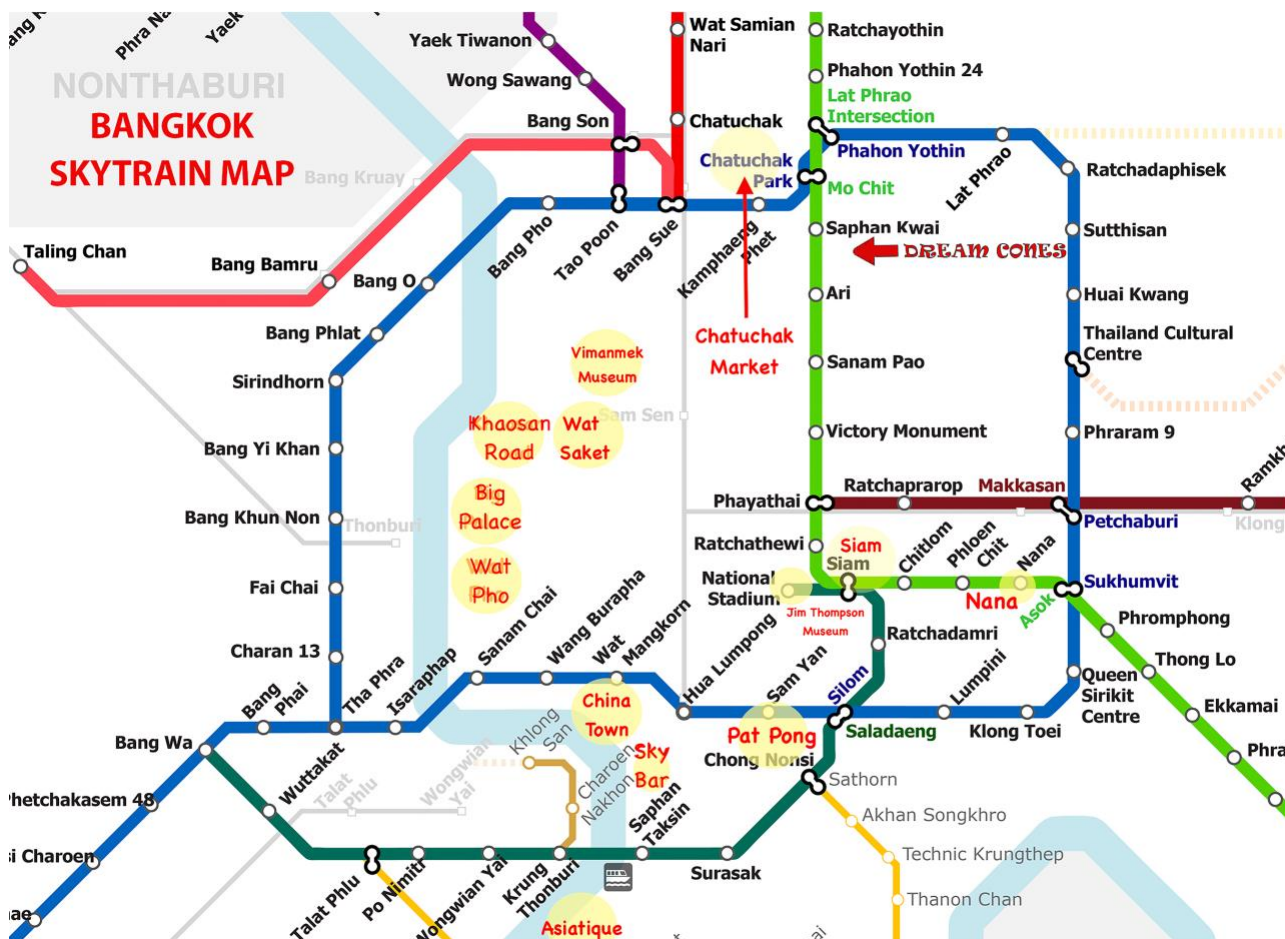
BUY A CHIP: Buy a Thailand phone chip in one of the many airport stores or any 7/11. Have the girl install the chip. No problem! Airport people speak English.

TAXI FROM AIRPORT: When arriving at Bangkok International airport, go to the official taxi stand outside the terminal, where there is a line of people waiting for taxis. The clerks at the taxi stand speak English. Tell them where you want to go and they will write the instructions for the driver and give you a receipt.

OUR ADDRESS: 170/1 Pahonyotin Soi 14. To get instructions for someone in Thai, call my wife, Apple, at +66814235311 or Ae at +66873644892. If you use a "local" chip +66="0"

Use of the Sky Train

Due to gridlock by far the best way to get around Bangkok is by Metro. Sky train and linking subway. On the next page is a map of the system. PRINT OUT AND CARRY.



PRINT THIS MAP AND SAVE

SKYTRAIN AND MERTO MAP: For sky train, "N" is north-south, "E" is east west and you have you change at Siam Center to get on the south (dark green) route. Change booth clerks speak English and give directions. Routes are described by end-station names: "Mo Chit" is toward our factory and "On Nut" is toward the centers, SIAM and SUKHUMVIT.

Transportation In the City

SKYTRAIN: The best way to get anywhere in Bangkok is by sky train or subway. When using the sky train to reach us, exit at **Sapan Khwai**. You will pass the "Big-C" supermarket on the right (East, "sunny" side) just before you reach Shapan Khawi station. Get off on the "Big-C" (East-right) side. Get Taxi or Took-took to our factory--about 5 minutes away.

SUBWAY: If you are taking the subway to reach us the best exit is Chatechak Park, which is also the location of the Famous weekend market. From Chatechak take a taxi or Took-Took to our factory.

TAXI: Taxis are inexpensive and should not cost more than 150 baht (\$4-5USD) for a trip anywhere in the city. Before entering a taxi tell the driver where you want to go. The taxis are metered. If the

driver quotes you a price or does not activate the meter it means he plans to over-charge you. Show the map on the following page and if the driver does not seem to understand take another taxi. Some Thai taxi drivers cannot read a map.



←TOOK-TOOK: These are great for short trips and lots of fun. Ask price before entering.

MOTORBIKE TAXI: Cheap and the fastest way to go short distances, sometimes terrifying but accidents are extremely rare. Motorbike taxi drivers wear an orange vest. Wear helmet. Ask price in advance.

CELL PHONE: Stop at any 7-11 and buy a local chip-150 or 300 baht. Shops in the airport also sell

Exciting Bangkok



←Wat on Big Buddha night

Bangkok is an exciting town, a bit like the Wild West, lightly regulated and very permissive. Thai Buddhism is the predominant religion but churches, mosques and other religious institutions abound. Thai Buddhism is a strange combination of animism, Buddhist philosophy, with incorporated Hindu gods, winged serpents, strange mythical creatures and spirits. Almost every structure has both a

Buddhist shrine and a spirit house, into which offerings are placed to appease the disturbed spirits of the land. The King is considered a god. Never say anything bad about the monarchy or throw money, which has the king's picture on it. Criticizing the King is a serious crime.

LOCAL CUSTOMS

Always remove shoes when entering a house, temple or our factory. Shoes by the door tell their tale. Do not smoke in restaurants or public places. Only 'Wa' (clasp hands and bow) to older people or superiors, never sales people, waitresses or assistants. If those people 'wa' you, smile and bow slightly. Always dress neatly when entering a Wat (temple). Women must wear long sleeves and a skirt when entering the Grand Palace. 'Face,' meaning pleasant deportment and not embarrassing others' is the cultural driving force of Thailand. 'Chai Rhone,' or 'hot blood,' meaning losing one's temper is extremely impolite. **Thank you** is 'cop-koon-kop' (male) and 'cop-koon-ka' (if you are a woman).

If there is one predominant theme in Bangkok it is **food**. The number of eateries is simply astounding and Thais eat many times per day. Food is everywhere and the rule, 'the cheaper the better' is generally true, unless you visit the really high-class restaurants. The most expensive and least delicious food is tourist food and restaurants catering to tourists are pricy and usually not the best. Thai food is often too spicy for those unfamiliar with it. **To ask for food that is not spicy, say "My pet."** Tens of thousands of street vendors sell food which is generally quite delicious and cheap.



<--Bangkok River

BELOW: High speed longtail ferry.



It is unusual to get sick from this food but of

course make sure what you buy is hot, or ask that it be reheated. Do not eat unwashed fruit or anything uncooked. Drink only bottled water. It is wise to bring some dysentery medication or buy some when you arrive. Aside from narcotics, most drugs are available "over the counter" in Thailand. Imported drugs are not cheap but it is better to stick with imports.

The main tourist area of Bangkok is by **the river**. **Kaho San Road** is located there. The **Ban-glampfu** area near the river is the oldest part of Bangkok, has many cheap eating places and open-air cafes. It is packed with tourists during the "high Season," from November thru March, which is the dry, relatively cool season.



← Thonburi Canal

In general Bangkok is fairly hot, with temperatures in a narrow range from 28-32°C. You will not need a coat or long sleeved shirts.

The river area is the "most fun" but far from our. Get our River Tour brochure. The river is a major highway, full of inexpensive boat-taxis, high speed express long tail ferries, tourist boats that visit the many canals which also abound with high speed canal taxis.

The trip into the **Thonburi canals** is famous and well worth the time, as it the river trip to the **Damneon Saduk floating market**. You can also take the **Chao Praya River express** which begins at Wat Ratchasingkhon, a 3-hour cruise for about \$1. Dinner cruises and of course many commercial vessels and ships make the river exciting but noisy.

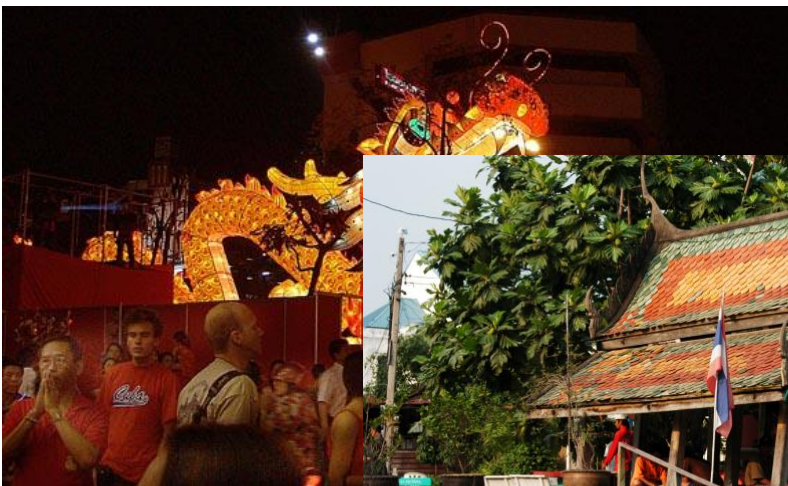




The Grand Palace



Grand Palace & Military Museum seen from City Pillar



Without a doubt, the most interesting tourist attraction in Bangkok is the **Grand Palace** and

the nearby City Pillar. The Grand Palace is a “must see.” The road across the street, leading up the hill is lined with street vendors selling amulets and charms. The river and river taxis are about one block away.



◀ Chinatown on Chinese New year



ritzy, high action area but lodging there is expensive.

The most upscale and interesting area is **Sukimvit**, which is the newest area of the city from the river. The Hotel Rembrandt is a Sukimvit landmark and has a terrific Mexican restaurant. Landmark is a famous business hotel with a good center. The Golden Palace is low priced, has private bathrooms.

The area around the **Nana** sky train station is "Middle East." The open air restaurants in the area are exotic and full of delicious middle-eastern food. The **Grant and Park Hotel** (about 1,600 baht/night but fun) in this area are full of Indians, Pakistanis, Arabs, many in traditional clothes. The most famous grilie bars are in this area. While there are brothels in Bangkok, bar girls are independent, do not have "pimps" and not part of organized crime.

◀ The Autogar Market

Alas, our factory is located in **Central Bangkok** in a nice area but not populated with many good hotels or main tourist sites. The closest sky train exit is "**SAPAN KWAI**." From there you can get a motorbike taxi or Took-took. Print out the locator map below and show it to the driver.

The famous **weekend market, Chatuchak** and the equally fascinating **Autogar (food) Market** are just two sky train stops past our exit. Autogar is open daily. Chatuchak is open from Friday afternoon thru Sunday night. In general Thais do not bargain much but at Chatuchak, one should expect to bargain down about 30-40%. This market is a confusing warren and the rule is: if you want something, buy it immediately as you will never find your way back to it. Bangkok is a tourist town and about 12 million foreigners visit the city every year. ATMs are the easiest way to get money, but banks change most currencies.

Other interesting areas of Bangkok are: **Chinatown**, which is noisy and very crowded with endless warrens of chop houses and narrow lanes. It is a nice place to visit at night and there are many good restaurants in Chinatown. Not many tourists stay in Chinatown because it is noisy and crowded.

◀ Chinatown temple

The "center" of Bangkok shopping, if there is one, is posh **Siam Square**, accessible by both canal taxi and sky train. Nearby Mahboonkrong ("Marvin Krong" or "**MBK**") is probably the largest and most affordable of the



malls in the area. This is a

and far

The business a/c and

"Little area food.

Some of there



The Autogar Market

Kahosan Road

Kahosan Road is a tourist walking street (at night) with a bit more soul than many other tourist traps. It is an exciting place and there are also numerous side streets with well-kept small hotels and bars, which seem to come from a more leisurely age. Bars with rattan furniture and creaking overhead fans are open onto the street. For many a young back-packer, Kahosan Road and its side streets are the very essence of what exciting Asia is all about.

The food on the road is touristic but there are other, cheaper, better restaurants on the side streets. The nearby riverfront *Sanam Luang Park* is a must—misty and serene in the early morning with a strong presence of the river at night. Mats of vegetation float bye and the muddy river is alive with exotic craft.



Kahosan Road is a throbbing "must see" when visiting Bangkok



View from Sanam Luang Park. Junk-ferries, high speed longtails, and numerous tugs with long tows ply the river day and night.

Kahosan Road is not on the sky train or subway route. It is accessible by taxi or you can take the skytrain south line to Sapan Taksin then take the ferry about 5 stops to Kahosan. The ferry zig-zags across the river but Kahosan is on the starting side. The ferry ride is "worth it."

Best Bargains in Bangkok

I always tell my friends that the two best bargains in Bangkok are a bar girl and a nose job. Dental work is really cheap and there is a first-class hospital with a dental clinic near us. Plastic surgery is cheap and excellent. The "for pay" hospitals, particularly those catering to foreigners are among the best in the world. Many people find they can come to Bangkok, get plastic surgery, have a vacation and return home and it is still cheaper than the same procedure in the west.



←Thai silk

Another outstanding bargain is **silk**. Thai silk tends to be pure and tightly woven. It is a bit of a hard fabric but lasts forever. In the small shops and night market one can also buy softer Cambodian and Indian silk at low prices. In the better malls one can find inexpensive silk-cotton blend clothing. In general clothing is cheap. Copy-products are illegal in theory but abound. In some cases the quality of copied goods is almost as good as the original.

The high-tech center of Bangkok is Pentip Plaza (exit sky train at Raratchiewra and take a motorbike taxi about 1 km) a 6-story mall packed with computer equipment and software. Almost any pirate software, movies and music can be had for about \$4.

If you have never had a **Thai massage**, you have missed out. The 2-hour massage (you can get 1-hour) is wonderful and leaves you feeling so relaxed.

Hotels in Bangkok

You can find lots of inexpensive hotels in Bangkok, some for as little as \$15/night. Always get a room with air conditioning and a private bathroom if possible. Look at the room before paying. Many inexpensive rooms do not have hot water but the water in Bangkok is never really cold. Many showers are demand type water heaters. Be sure the unit is grounded or BE CAREFUL! We are listing just the hotels we know personally. There are many, many excellent hotels in Bangkok!

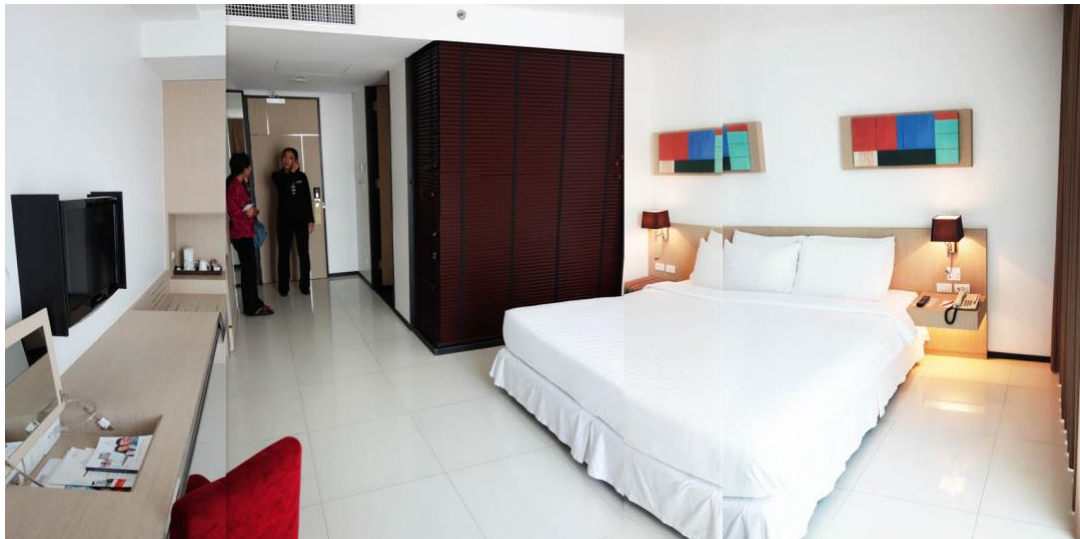
In general, convenient hotels are close to the sky train, which is by far the best way to get around Bangkok. We are close to the Soi SAPAN kWAI and the Soi AREE sky sky train stations. From the station you can get a motorbike taxi for about 40 baht (\$1.10 USD), a 5-minute drive to our factory. Many halal restaurants are located near us and many more in "Little Arabia" in Sukimvit.

Vic 3 Hotel *** **Our recommendation.** Studio \$53; Superior \$63/nite includes breakfast
Prices: Be sure to tell them you are a Dream Cones student to get this discount

No 89 Phahon Yothin Soi 3 Phaya Thai, Bangkok 10400 Thailand Tel:(66-2) 618 9888 Fax:(66-2) 618 9899
 Email:enquiry.bangkok@the-ascott.com **Reservation Phone: (66-2) 344 2500**

The Vic 3 is a new 3-star hotel, so-rated because of its modest price but we think it is 4 star. The Sanam Pao Sky train station is right outside the door. The hotel is a short block off the main highway and therefore quiet. Vic 3 is just two Skytrain stops (7 minutes) from the Sapan Kwai station, which is closest to Dream Cones. Or, you can take a took-took cab direct to our factory for about \$2.

One Skytrain stop to the north, Soi Ari, is a really upscale mall, the The Villa, with many excellent restaurants, classy shops and very upscale supermarket. Across the street from the mall is Soi Ari, with many food stands, restaurants and shops. Three stops to the north is the famous Chatachat weekend market. 5 minutes walk from the hotel in the other direction is Victory Monument, a round-about with famous statue and park, surrounded by many shops and restaurants.



Vic 3 superior room-computer connect on lower left



The pool, next to the exercise room, on the 5th floor is to die for. The rooms come in three sizes: studio, a bit snug at 20 s.m. twin bed studio and superior, which we recommend. The rooms are very pleasant, have cable TV, fridge, wi-fi and a nice bathroom.

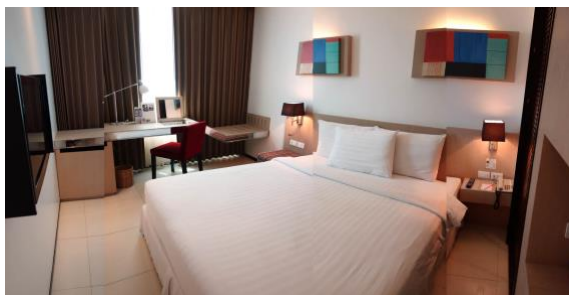
The hotel is very close to Phaya Thai Hospital, where Dr. Greenwald attended before his retirement. Although there are larger, fancier, more famous hospitals in Bangkok, we think Phaya Thai 2 is excellent and very reasonable. It has an excellent dental clinic and our

dentist there was educated at Stamford University. Dental work in Thailand is much cheaper than in the west.

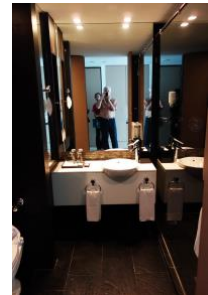
The "Love Eat" restaurant is part of the hotel, has quite good food, a menu in Thai and English and a lovely bar. The room comes with breakfast, both western and Asian. Our students rate the food as quite good. Right outside the front door are many food stands on a pleasant quiet alley.



the pool



Studio with king size bed

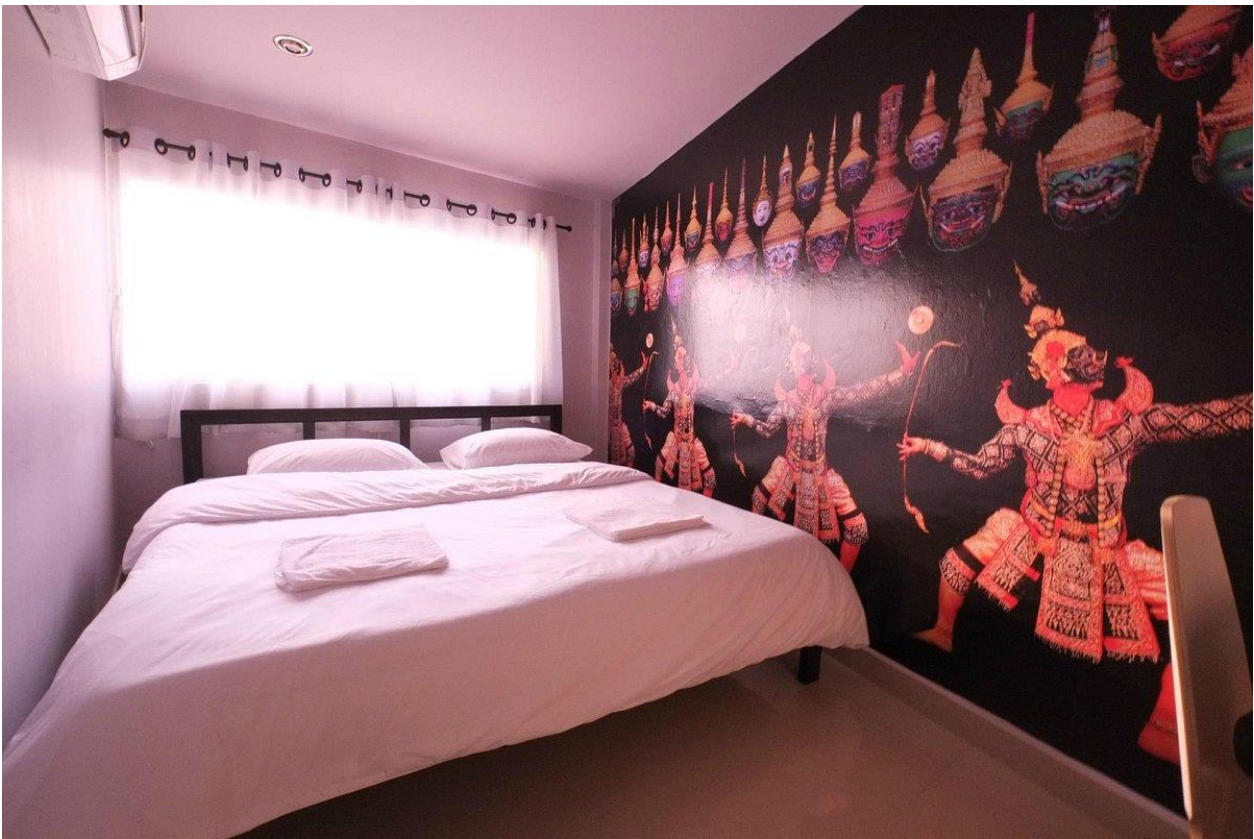


Bathroom

Everyday Sunday Social Hostel

466/1 Phaholyothin Rd., Sam Saen Nai, Chatuchak, Bangkok, Thailand, 10400

"Staff are the highlight, super helpful and welcoming even helped us arrange transport to our next place. But impeccably clean, great food and nice rooms. Cannot recommend this hostel enough. I had to pad out the review with this sentence because theres not much else to say, if youre coming to bangkok, stay here".



This small, but lovely hotel, located on the main road, Pahonyothin, close to many restaurants, walking distance from our location on Soi 14. It is billed as a backpacker's hotel and it has a

dormitory but the private rooms are excellent, fresh and clean. The private rooms have a sink but share a bathroom.

Aside from the shared bathrooms it is actually a cut above what is called a "business hotel," free wi-fi, computer station, parking, A/C, keycard access 24/7, about 5 minute walk to Skytrain. It is the closest to Dream Cones and prices are moderate, about \$20/nite. It is within walking distance of us and taking a took-took makes it a 7 minute trip. Quite close to the famous Chauthak Weekend Market. It gets excellent reviews for both décor and cleanliness.

Mansion Sarasinee @ Chatuchak

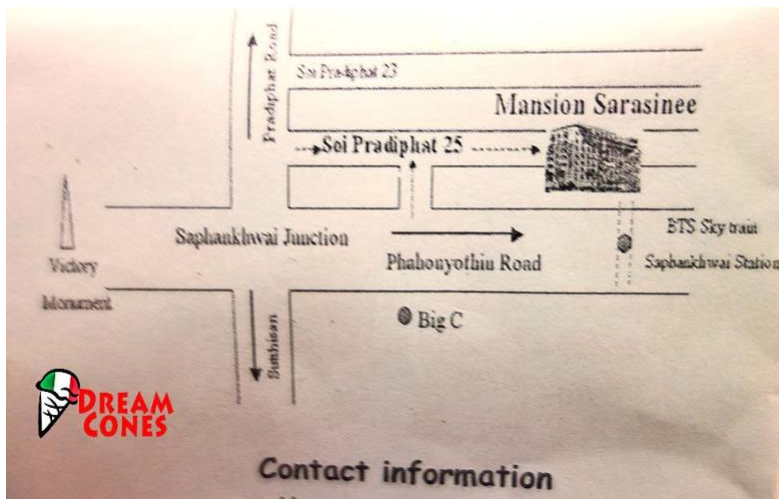
74 Soi Padipat 25, Padipat Road, Samsennai, Phayathai, Chatuchak, Bangkok, Thailand 10400
Tel: +66 (0)2 2783222 | Fax: +66 (0)2 2783840 | sales@mansionsarasinee.com www.sarasinee.com

The Maison is a budget hotel about the same distance from us as the Sena. It is bright and clean but basic. It is rated well at 7.2 and cleanliness 7.6. The photos were taken by me. The rooms are all simple with inexpensive furnishings but very neat, celan and all have views although not scenic. Each has a large refrigerator and TV and free wi-fi in the room. There is a coffee shop and a small exercdise room. The hotel is located on a long alley full of food shops and interesting native markets. However there is a narrow walkway thru to the main street, Pahonyothin and a pedestrian overpass there that takes you right to the skytrain. It is a tossup whether it is walking distance from us, maybe 20 minutes to Dream Cones but there is a motorbike taxi stand right outside the hotel. Across the main street, Pahonyothin, is the Big C Supermakret and many shops and restaurants.

The Maison and the Sena (below) are both Budget hoptels and similarly priced. The Sena is larger and a little closer. But the Maison offers monthly rates which may be attractive to those who wish to staty lomnger than the training class.

Junior Suite 820THB (\$27)/nite, 11,500THB (\$383)/mo.-Shown below A little cheaper online booking)
Balcony Suite: 1,200THB (\$40), 12,500THB (\$416/month)





Sena Place Hotel

+66-38-364-700 --24/7 Call Center about \$24/nite FYI, 1,000 Thai baht= \$30 USD,

The 2-star Sena Place, a business hotel, located just off the main street, on Pahonyotin Soi 11 (and we are on Soi 14), opposite Soil 11 after crossing the main street. Pahonyotin Ave. Rated as clean, comfortable but nothing special. Sena Place is about a 10 minute walk from our factory and about 10 minute walk to the the sky train. The rooms on the upper floors are quietest although none of them have nice views. The hotel is located in a respectable but not upscale area and is not really close to anything but us. On the other hand the rooms are inexpensive and fairly priced.

http://www.asiarooms.com/thailand/bangkok/sena_place_hotel.html

Address : 17 Phaholyothin Road, Soi 11 Phayathai, Bangkok, 10400 Thailand.



Sena Place room pic taken by one of our students

Sukimvit Area

The Sukimvit area is not near Dream Cones but you can easily reach us in about 20 minutes by Sky train. It is unwise to try and take a cab from Sukimvit to our factory because of traffic.

Sukimvit is "ground zero" for a huge number of *halal* and also Indian food restaurants and is a favorite place for Muslims, Indians and other West Asians to eat and stay. It is also the most famous "sin" area of the city, Soi 11-28, with famous streets like "Soy Cowboy" on Soi 28. Even if you do not want a girl it is fun to visit these bars. BTS runs along Soi Sukimvit and there are several Skytrain stops in the area.

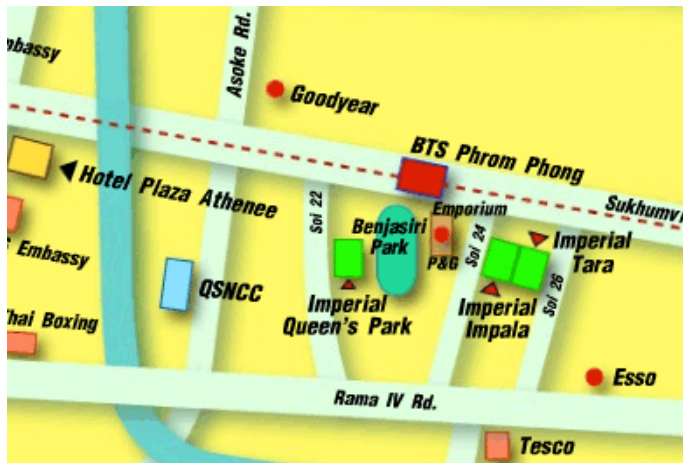
Imperial Tara hotel Bangkok

Address : 18/1 Sukhumvit Road Soi 26, Bangkok 10110 Thailand

Hotel Location : City Center **Area :** [Sukhumvit](#)

Asiarooms Rating : Superior ★★☆☆

A close to the sky train (Prom Pong). Close to the Emporium department store and many nice shops. About 15 minutes by sky train from us. Hotel always gets good reviews



3,000THB= about \$102 USD

Standard Room 2379THB *++ **Superior** 2634THB *++ **Deluxe** 2889*THB ++ **extra bed** 750THB May 03 –to Oct 31, more in high season

Swiss Park Hotel Bangkok

Address : 155/23-24 Sukhumvit Soi 11, Sukhumvit Rd.,

Bangkok 10110, Thailand

Hotel Location : City

Area : [Sukhumvit](#)

Asiarooms Rating : Superior ★★☆☆

Travelers Rating 😊😊😊😊😊😊

: Average of **346** review (s)



Swiss Park, located close to the sky train (Nana) is very nice-looking with a good business center. 15 floors-try to get high up for quiet. Soi Asoke, another interesting street is not far away. The sky train ride to Soi SAPAN KWAJ is about 15 minutes. Swiss Park has a nice pool, the breakfast is fair. Rates are fair but not a bargain.

Superior 1,750 Baht

Executive 2,150 baht

Suite 3,150 Baht

Extra Bed 800

=====

All hotel prices vary with the season. Book on line (except the Vic3).

WHAT YOU SHOULD BRING WITH YOU

Everything is available in Bangkok. Clothing is a bargain and you can even buy "winter" clothes! Silk is good and cheap and makes a fine gift to take home as it is unbreakable and light.

Liquor is expensive. Before departing for Bangkok load up on wine and liquor in the international shop at your airport. You can also buy it in the Bangkok airport when you arrive before clearing customs. You can also buy "after" clearing customs but the selection before is better.

If you have a laptop, bring it as you can use our wireless network and printer.

Bring a comfortable pair of walking shoes and hot weather clothes.

Change money at the airport or numerous exchanges in tourist areas but you can easily get more money at the many ATMs but there is an \$8 charge.

Always carry food when you travel overseas. Put some durable snacks like nuts and dried fruit in a bag and put in your carry-on bag. Always carry some candy and aspirin.

If you have a favorite soap, take that.

If you want to load up on electronics and tax-free, be sure to get a tax rebate certificate when you shop. Present it at the airport before departing for a tax refund. Allow 45 minutes for paperwork bs.

If you want to see more of Thailand the northern city of Chang Mai and Chang Rai are well worth seeing.